



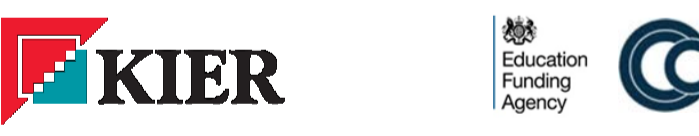
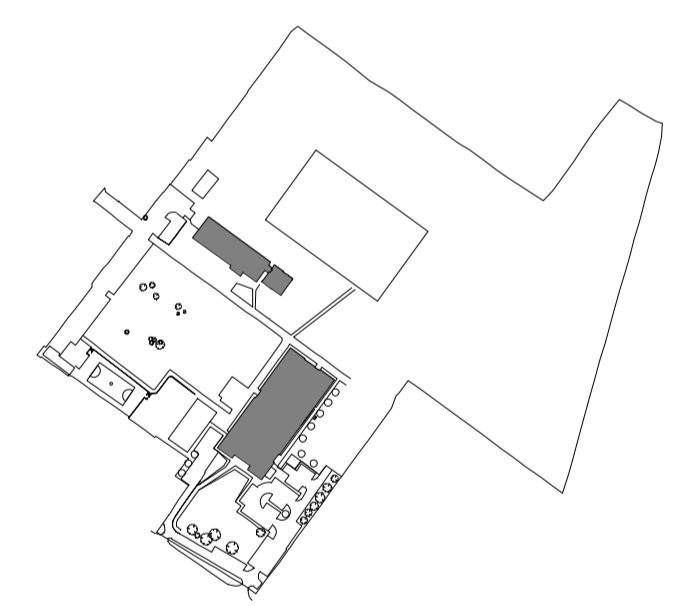
All rights reserved. KSS asserts its rights under the Copyright, Designs and Patents Act 1988. (Unless otherwise agreed in writing).

Figured dimensions only are to be taken from this drawing. All dimensions are in millimeters unless otherwise stated. All dimensions shall be checked on site prior to works commencing. Any discrepancies shall be reported to KSS. Do not scale this drawing.

Health and Safety Information
In addition to the hazards/ risks normally associated with the types of work detailed on this drawing, please note the following:

- Construction
- Maintenance / Cleaning / Operation
- Decommissioning / Demolition

Revisions		
P01	26.06.15	ITT Submission NG SS
P02	07.09.15	Issue for Planning NG SS



PLANNING
Client
KIER CONSTRUCTION
Project
CASTLE COMMUNITY COLLEGE

Drawing title
PROPOSED SITE PLAN

KSS
Scale at A1
1 : 500
File ref
15697-KSS-ARC-01-00
Drawn by
Date drawn

London 1 James Street London W1U 1DR T+44(0)20 7907 2222 F+44(0)20 7907 2299	Sevenoaks 7 Blighs Walk Sevenoaks TN13 1DB T+44(0)20 7907 2222 F+44(0)1732 467 841	NG 05.08.15
Checked by	Date checked	SS 05.08.15

Project number	Drawing number	Revision
15697	003	P02

