

**Health and Safety Information**  
 In addition to the hazards/ risks normally associated with the types of work detailed on this drawing, please note the following.

Construction

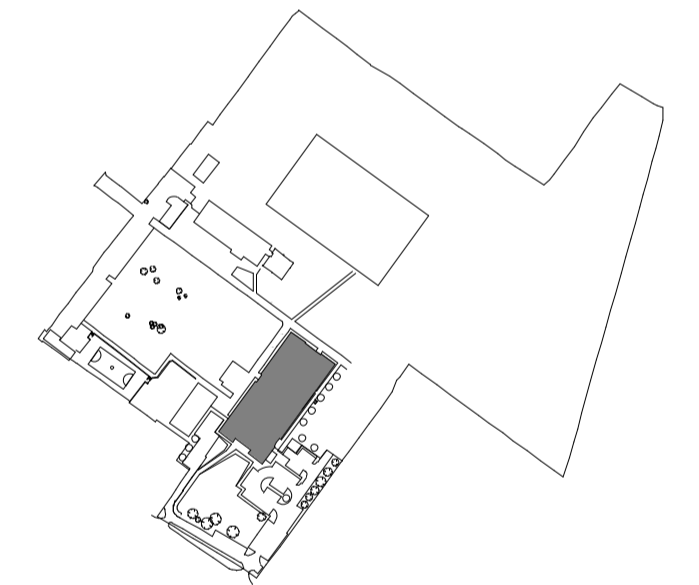
Maintenance / Cleaning / Operation

Decommissioning / Demolition

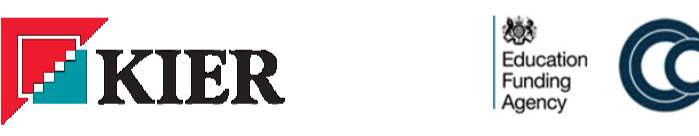
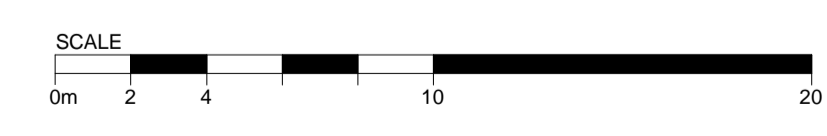
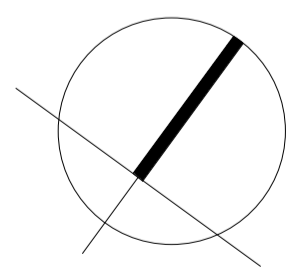
**Revisions**

/	07.09.15	PLANNING ISSUE.	VG	SS
---	----------	-----------------	----	----

- Basic Teaching
- Staff & Admin
- Storage
- Learning Resource Centre
- Halls, Indoor PE, Dining & Social Areas
- Non-Net Areas
- Void
- Maths
- Humanities
- English
- MFL
- Science
- unallocated
- Existing



**1** PLAN  
 FIRST FLOOR PLAN  
 1 : 200



**PLANNING**  
 Client  
 KIER CONSTRUCTION  
 Project  
 CASTLE COMMUNITY COLLEGE

Drawing title  
 TEACHING BLOCK PROPOSED  
 FIRST FLOOR PLAN

**KSS** Scale at A1  
 1 : 200  
 File ref  
 15697-KSS-ARC-01-00

London 1 James Street London W1U 1DR T+44(0)20 7907 2222 F+44(0)20 7907 2299	Sevenoaks 7 Blighs Walk Sevenoaks TN13 1BB T+44(0)20 7907 2222 F+44(0)1732 467 841	NG 07.09.15
Drawn by	Date drawn	Checked by
		SS 07.09.15

Project number	Drawing number	Revision
15697	PL-101	/