

Health and Safety Information
 In addition to the hazards/ risks normally associated with the types of work detailed on this drawing, please note the following.

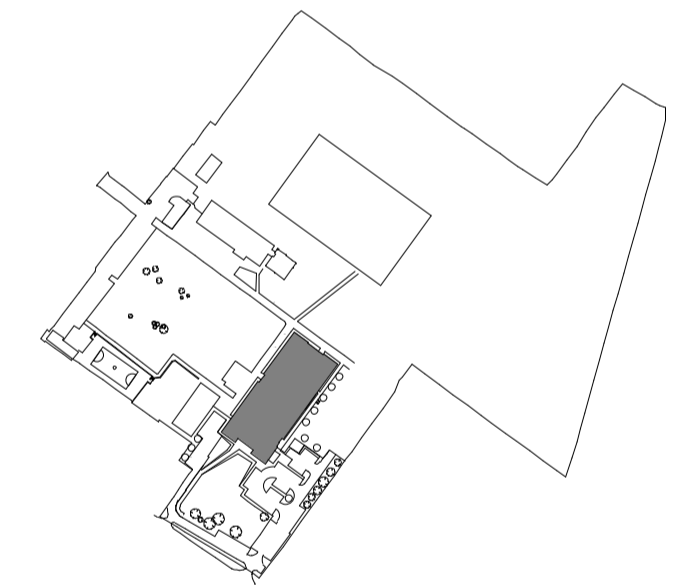
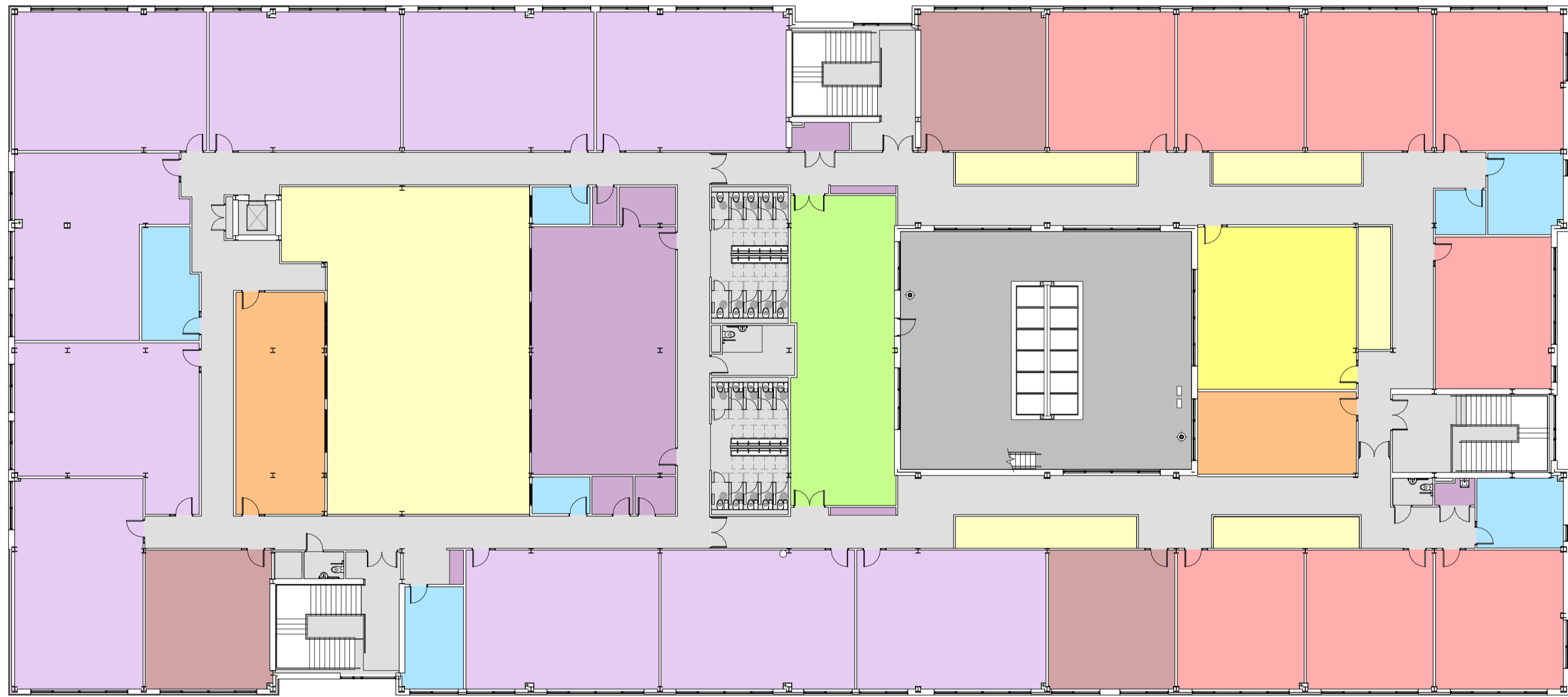
Construction

Maintenance / Cleaning / Operation

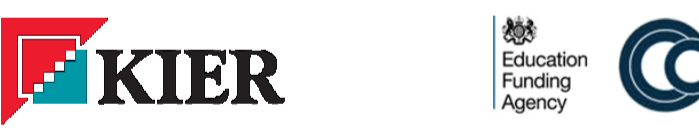
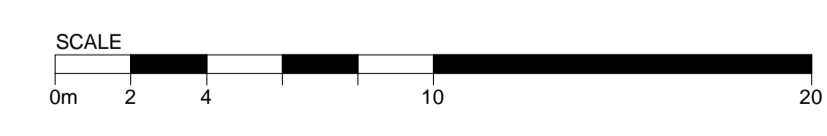
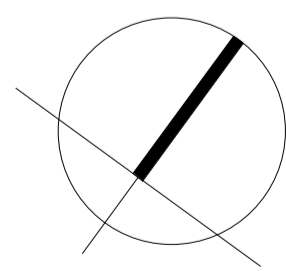
Decommissioning / Demolition

Revisions		
/	07.09.15	PLANNING ISSUE. VG SS

- Basic Teaching
- Staff & Admin
- Storage
- Learning Resource Centre
- Halls, Indoor PE, Dining & Social Areas
- Non-Net Areas
- Void
- Maths
- Humanities
- English
- MFL
- Science
- unallocated
- Existing



2 PLAN
 SECOND FLOOR PLAN 1 : 200



PLANNING
 Client
 KIER CONSTRUCTION
 Project
 CASTLE COMMUNITY COLLEGE
 Drawing title
 TEACHING BLOCK PROPOSED
 SECOND FLOOR PLAN

KSS Scale at A1
 1 : 200
 File ref
 15697-KSS-ARC-01-00
 Drawn by Date drawn

London 1 James Street London W1U 1DR T+44(0)20 7907 2222 F+44(0)20 7907 2299
 Sevenoaks 7 Blighs Walk Sevenoaks TN11 3 1BB T+44(0)20 7907 2222 F+44(0)1732 467 841
 NG 07.09.15
 Checked by Date checked
 SS 07.09.15

Project number	Drawing number	Revision
15697	PL-102	/