

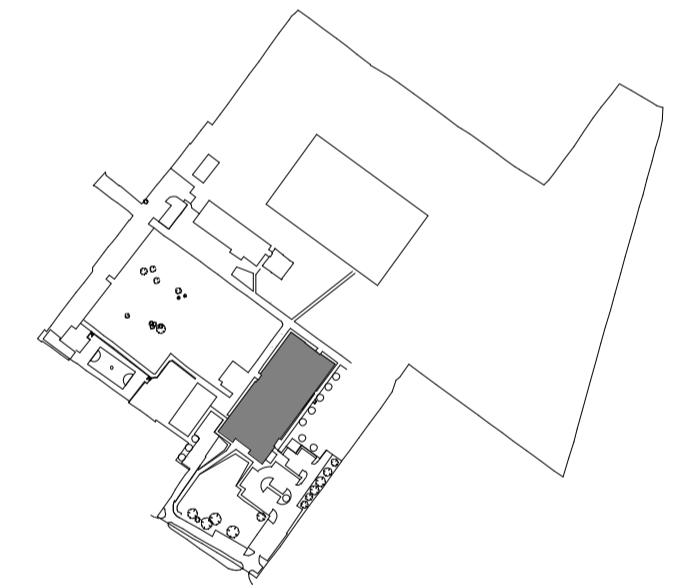
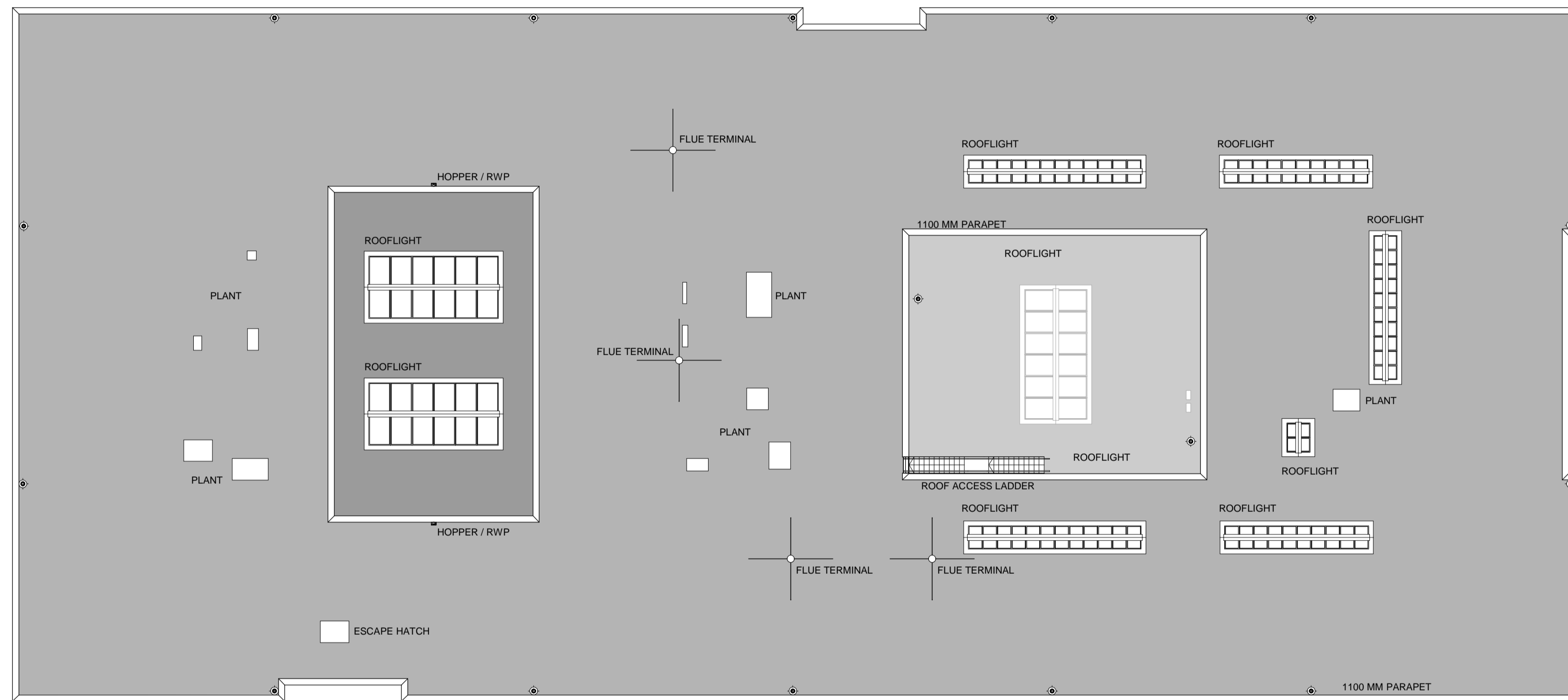
**Health and Safety Information**  
 In addition to the hazards/ risks normally associated with the types of work detailed on this drawing, please note the following.

Construction

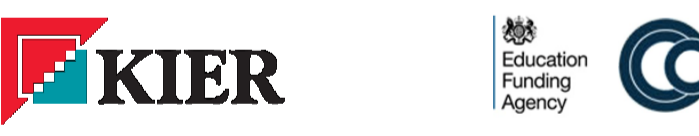
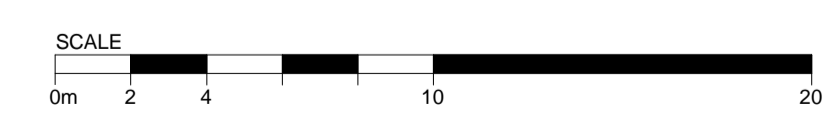
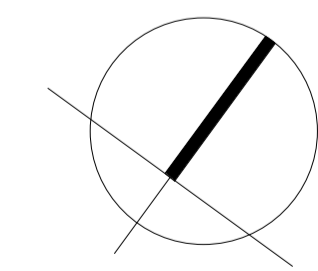
Maintenance / Cleaning / Operation

Decommissioning / Demolition

Revisions		
/	07.09.15	PLANNING ISSUE. VG SS



**R** PLAN  
 ROOF PLAN 1 : 200



**PLANNING**  
 Client  
**KIER CONSTRUCTION**  
 Project  
**CASTLE COMMUNITY COLLEGE**  
 Drawing title  
**TEACHING BLOCK PROPOSED ROOF PLAN**

**KSS** Scale at A1  
 1 : 200  
 File ref  
 15697-KSS-ARC-01-00

London 1 James Street London W1U 1DR T+44(0)20 7907 2222 F+44(0)20 7907 2299	Sevenoaks 7 Blighs Walk Sevenoaks TN13 1BB T+44(0)20 7907 2222 F+44(0)1732 467 841	NG 21.08.15
	Checked by	Date checked
	SS	21.08.15

Project number	Drawing number	Revision
15697	PL-103	/