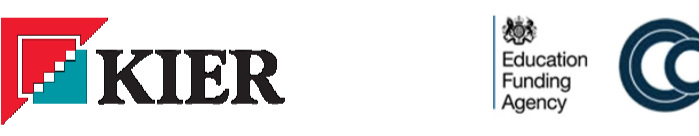
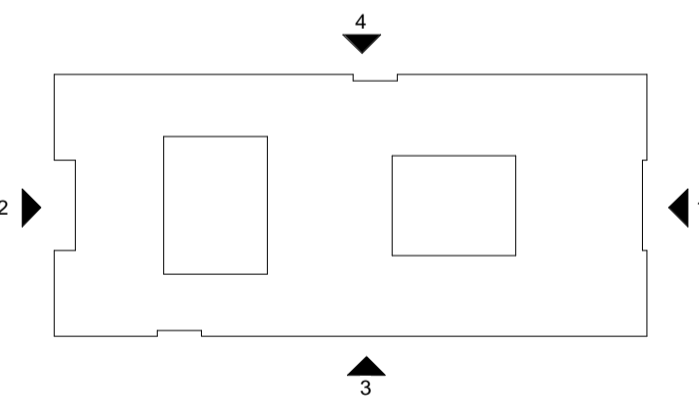


**Health and Safety Information**  
 In addition to the hazards/ risks normally associated with the types of work detailed on this drawing, please note the following:

- Construction
- Maintenance / Cleaning / Operation
- Decommissioning / Demolition

Revisions		
/	07.09.15	PLANNING ISSUE. VG SS

- LEGEND**
- A THROUGH COLOURED INSULATED EXTERNAL RENDER - COLOUR WHITE
  - B THROUGH COLOURED INSULATED EXTERNAL RENDER - COLOUR BLUE
  - C THROUGH COLOURED INSULATED EXTERNAL RENDER - COLOUR GREEN
  - D THROUGH COLOURED INSULATED EXTERNAL RENDER - COLOUR LILAC
  - E COLOURED RAINSCREEN PANEL SYSTEM - FACE FIXED - COLOUR GREEN
  - F COLOURED RAINSCREEN PANEL SYSTEM - FACE FIXED - COLOUR GREY
  - G POLYESTER POWDER COATED COMPOSITE WINDOWS
  - H POLYESTER POWDER COATED HIGH PERFORMANCE COMPOSITE WINDOW WALLING
  - J POLYESTER POWDER COATED ALUMINIUM COPING
  - K POLYESTER POWDER COATED ALUMINIUM FRAMED GLAZED DOORS
  - L POLYESTER POWDER COATED ALUMINIUM LOUVRED DOORS
  - M POLYESTER POWDER COATED ALUMINIUM DOORS
  - N ROOFLIGHT
  - P PLANT
  - Q FLUE
  - R ALUMINIUM RWP/HOPPER - COLOUR BLACK
  - S MICRO-RIB COMPOSITE CLADDING PANELS - COLOUR GULL GREY
  - T LIGNAGITE FACING BLOCKWORK
  - U COLOURED EXTERNAL RENDER - COLOUR BLUE
  - V WINDCATCHER - COLOUR TBC



**PLANNING**

Client  
**KIER CONSTRUCTION**

Project  
**CASTLE COMMUNITY COLLEGE**

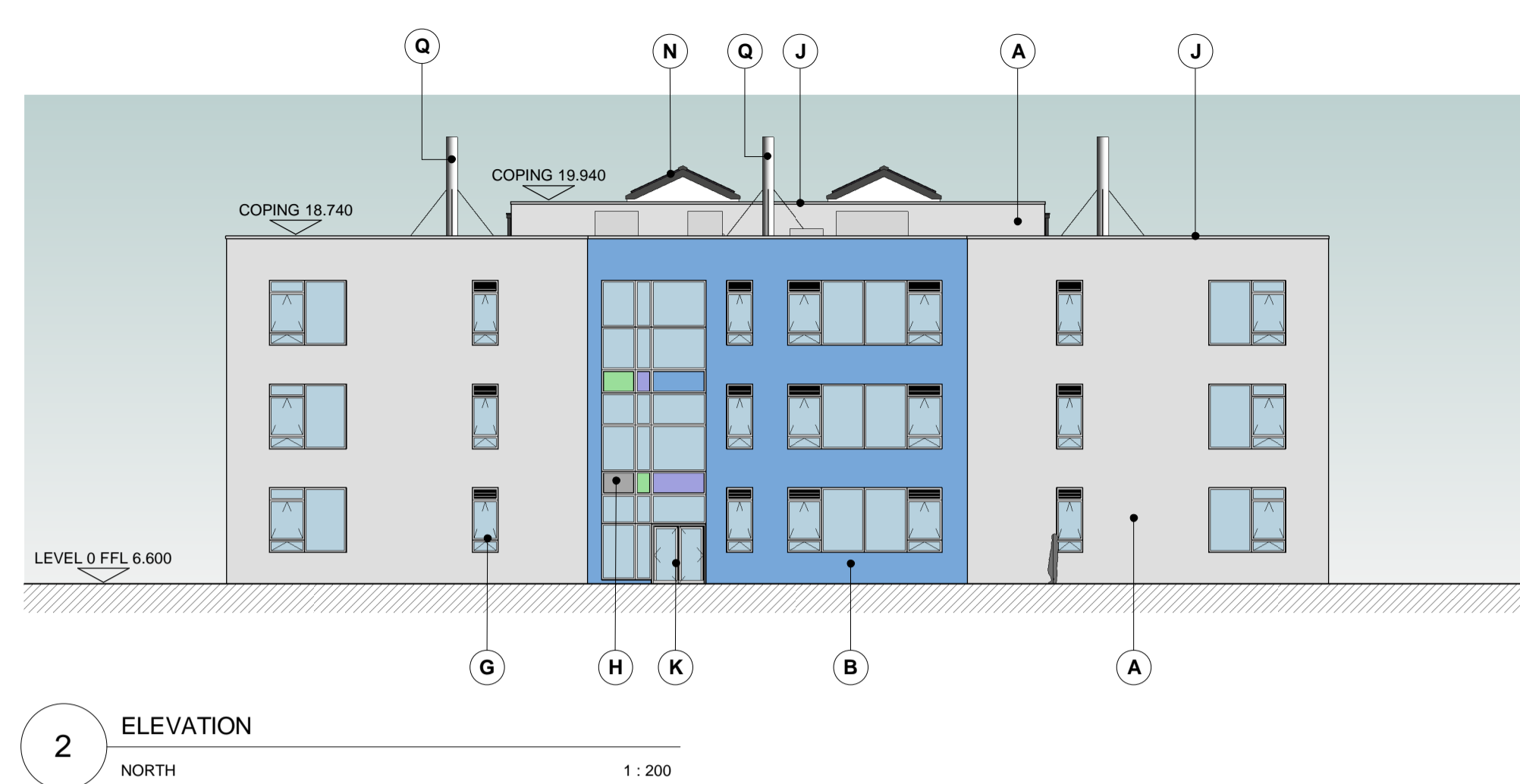
Drawing title  
**TEACHING BLOCK  
 PROPOSED ELEVATIONS**

<b>KSS</b>	Scale at A1	1 : 200
	File ref	15697-KSS-ARC-01-00
	Drawn by	Date drawn
	Checked by	Date checked
London 1 James Street London W1U 1DR T+44(0)20 7907 2222 F+44(0)20 7907 2299	Sevenoaks 7 Blighs Walk Sevenoaks TN11 3 1BB T+44(0)20 7907 2222 F+44(0)1732 467 841	NG 20.08.15 SS 20.08.15

Project number	Drawing number	Revision
15697	PL-310	/



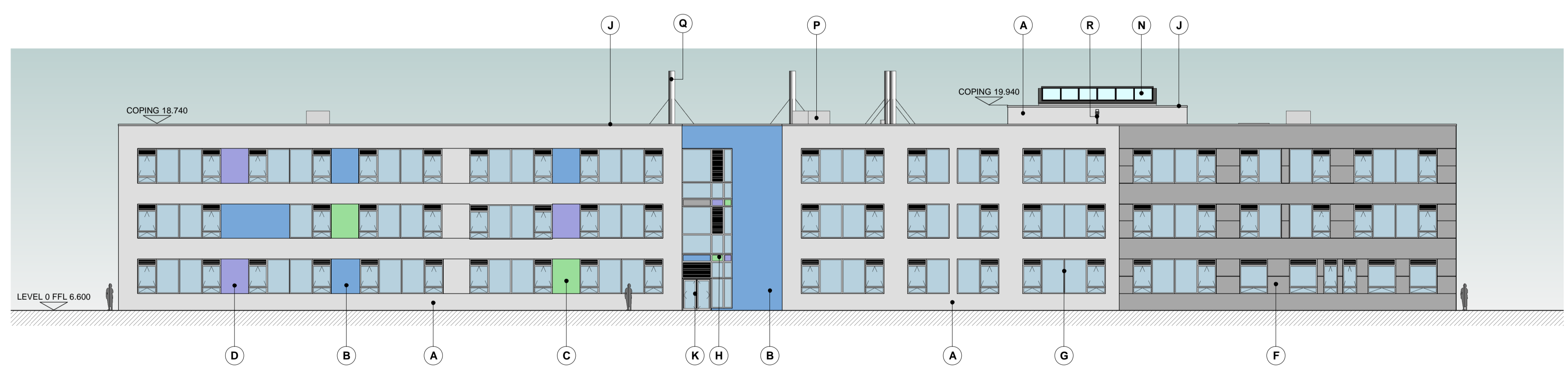
**1** ELEVATION  
 SOUTH  
 1 : 200



**2** ELEVATION  
 NORTH  
 1 : 200



**3** PLAN  
 EAST  
 1 : 200



**4** ELEVATION  
 WEST  
 1 : 200

