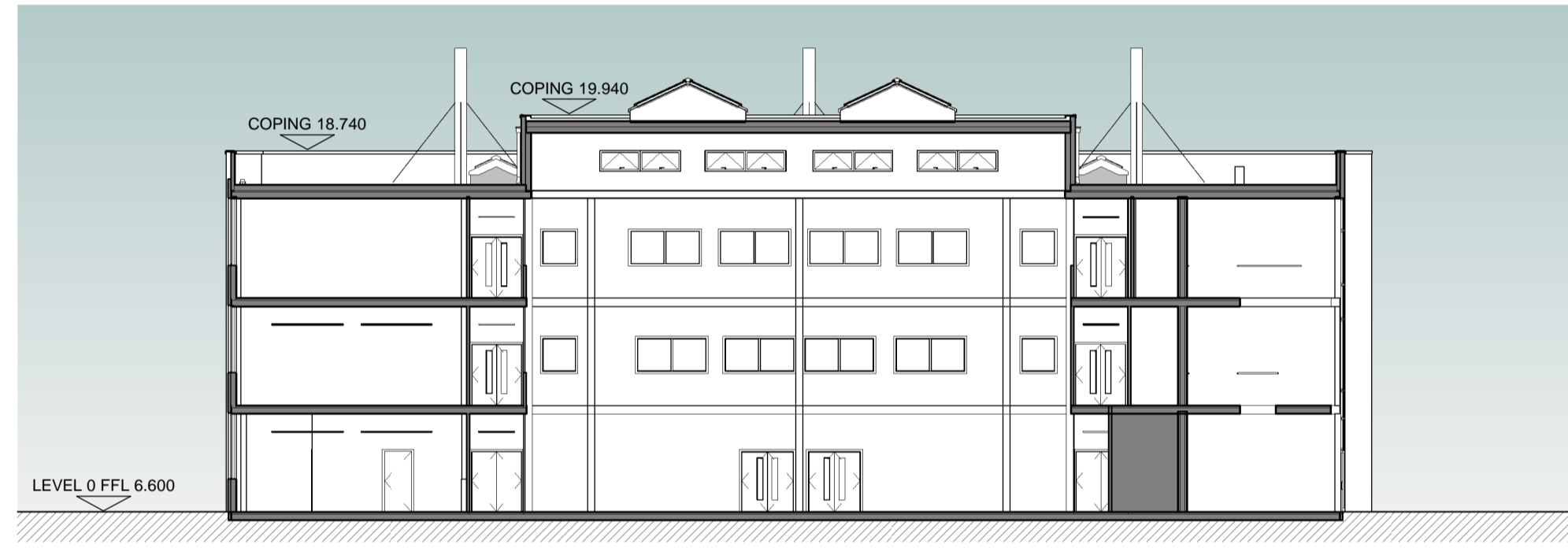


**Health and Safety Information**  
 In addition to the hazards/ risks normally associated with the types of work detailed on this drawing, please note the following.

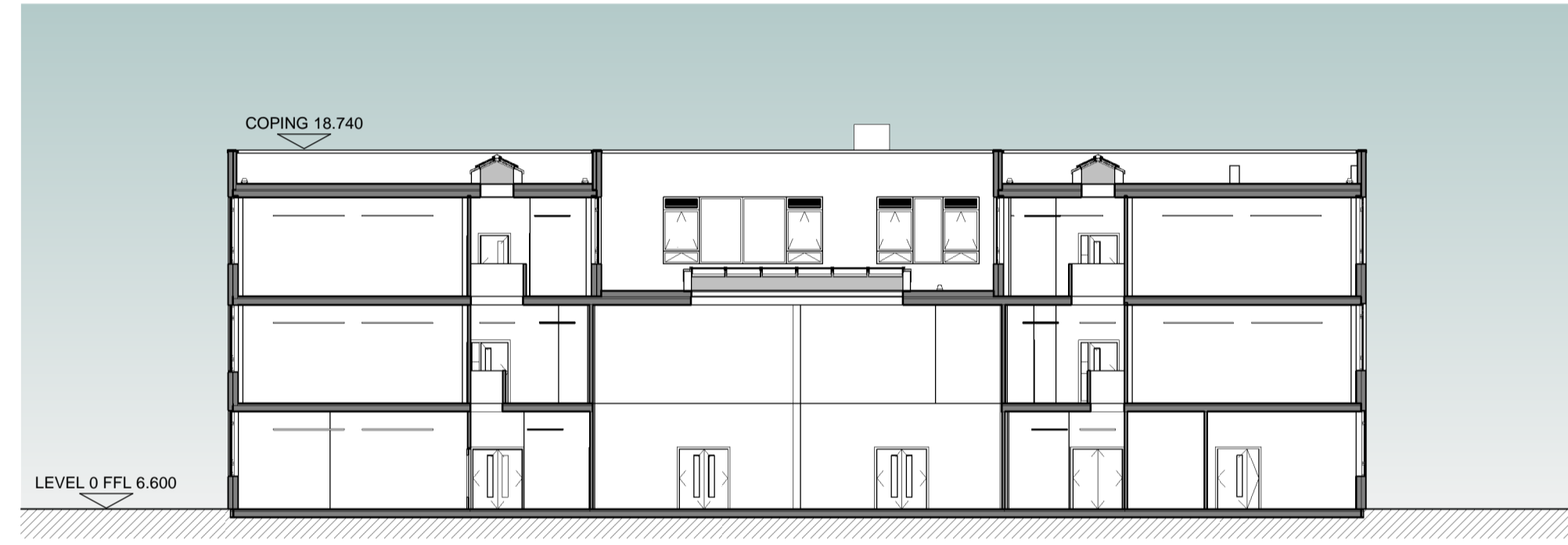
<b>Construction</b>		
<b>Maintenance / Cleaning / Operation</b>		
<b>Decommissioning / Demolition</b>		
<b>Revisions</b>		
/	07.09.15	PLANNING ISSUE. VG SS



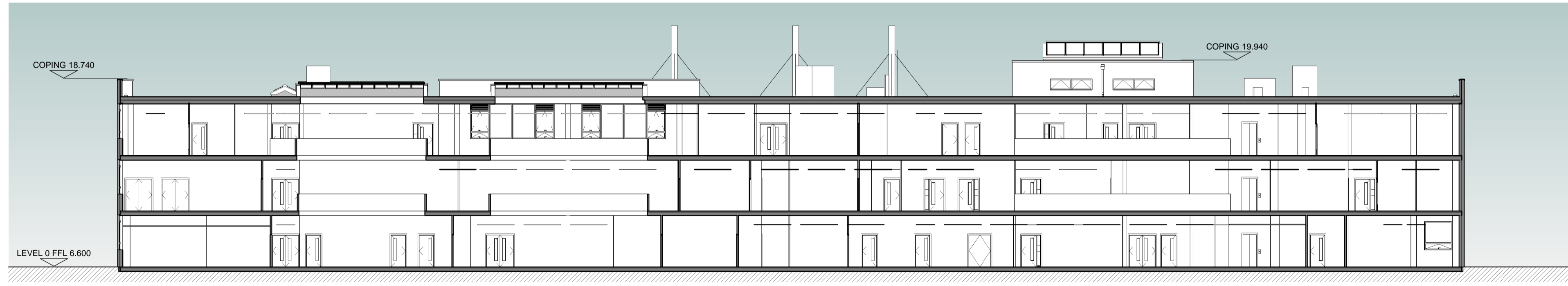
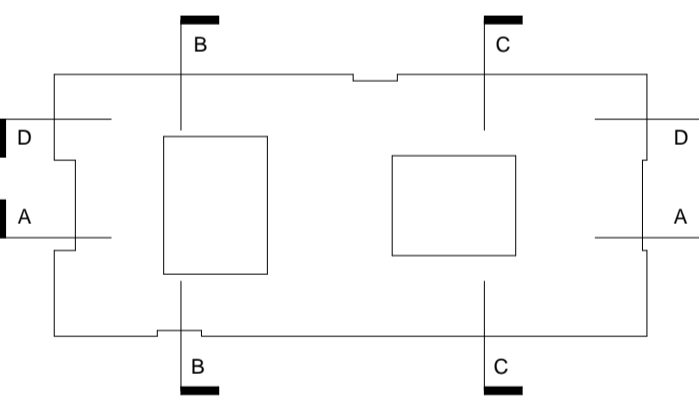
**A-A SECTION**  
 THRU DINING ROOM AND HALL 1 : 200



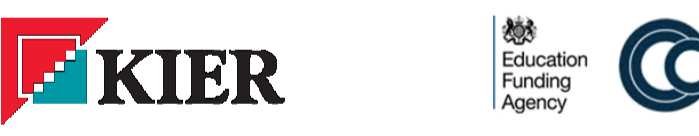
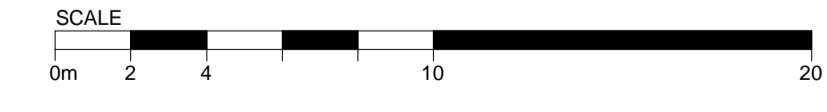
**B-B SECTION**  
 THRU DINING ROOM 1 : 200



**C-C SECTION**  
 THRU HALL 1 : 200

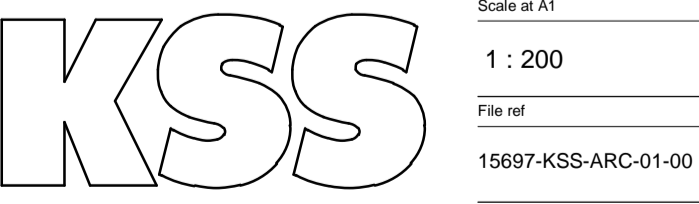


**D-D SECTION**  
 THRU CIRCULATION 1 : 200



**PLANNING**  
 Client  
**KIER CONSTRUCTION**  
 Project  
**CASTLE COMMUNITY COLLEGE**

Drawing title  
**TEACHING BLOCK  
 PROPOSED SECTIONS**



London 1 James Street London W1U 1DR T+44(0)20 7907 2222 F+44(0)20 7907 2299	Sevenoaks 7 Blighs Walk Sevenoaks TN13 1BB T+44(0)20 7907 2222 F+44(0)1732 467 841	Scale at A1 1 : 200 File ref 15697-KSS-ARC-01-00 Drawn by Date drawn Checked by Date checked SS 21.08.15
--	--	--

Project number	Drawing number	Revision
15697	PL-210	/