

Health and Safety Information
 In addition to the hazards/ risks normally associated with the types of work detailed on this drawing, please note the following.

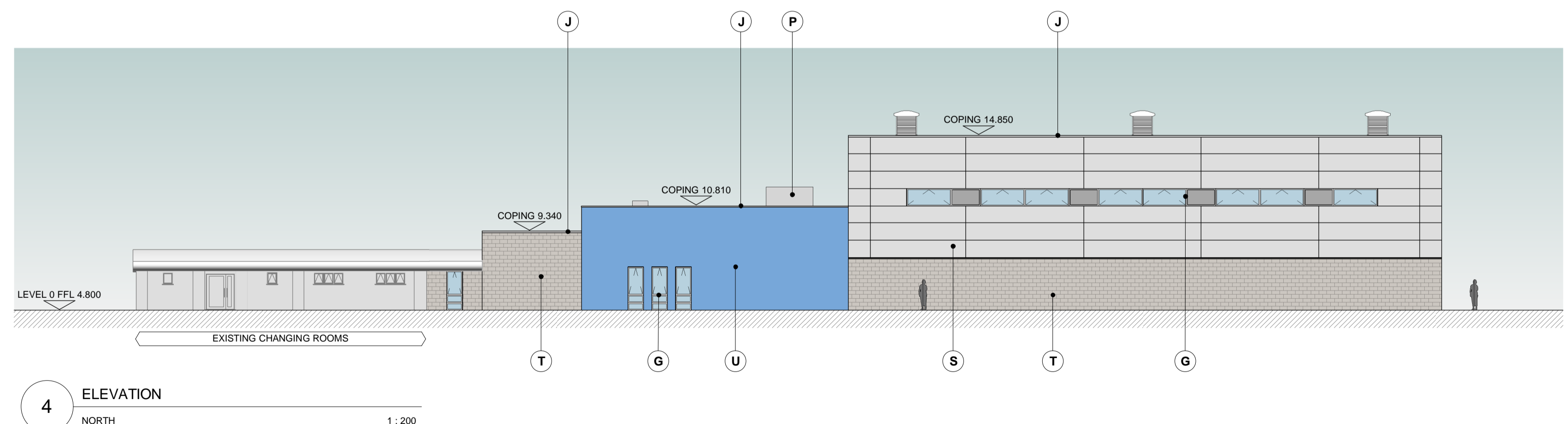
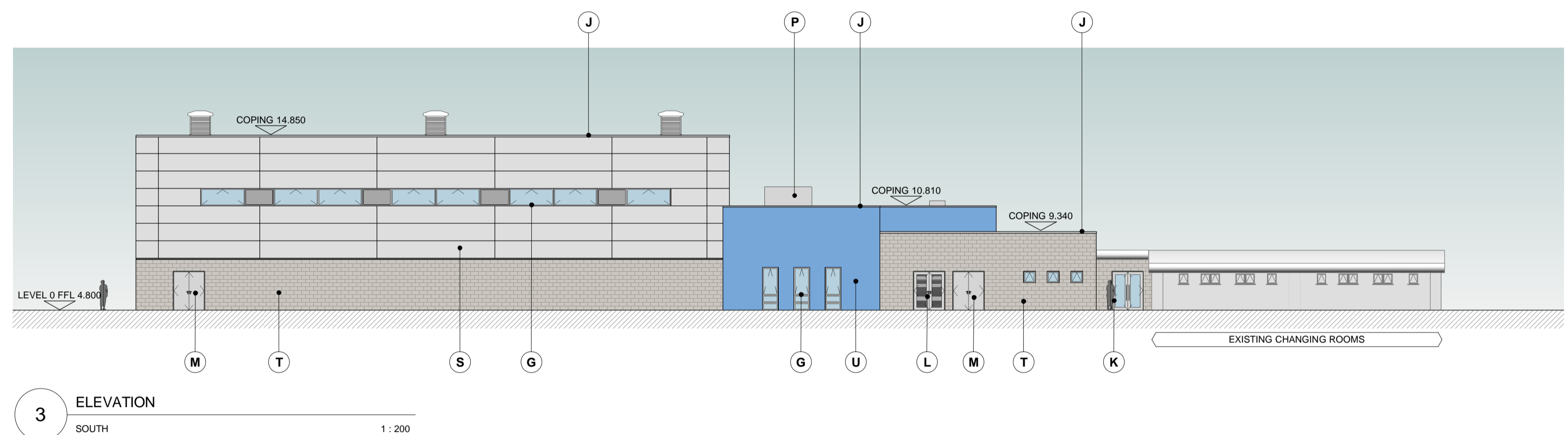
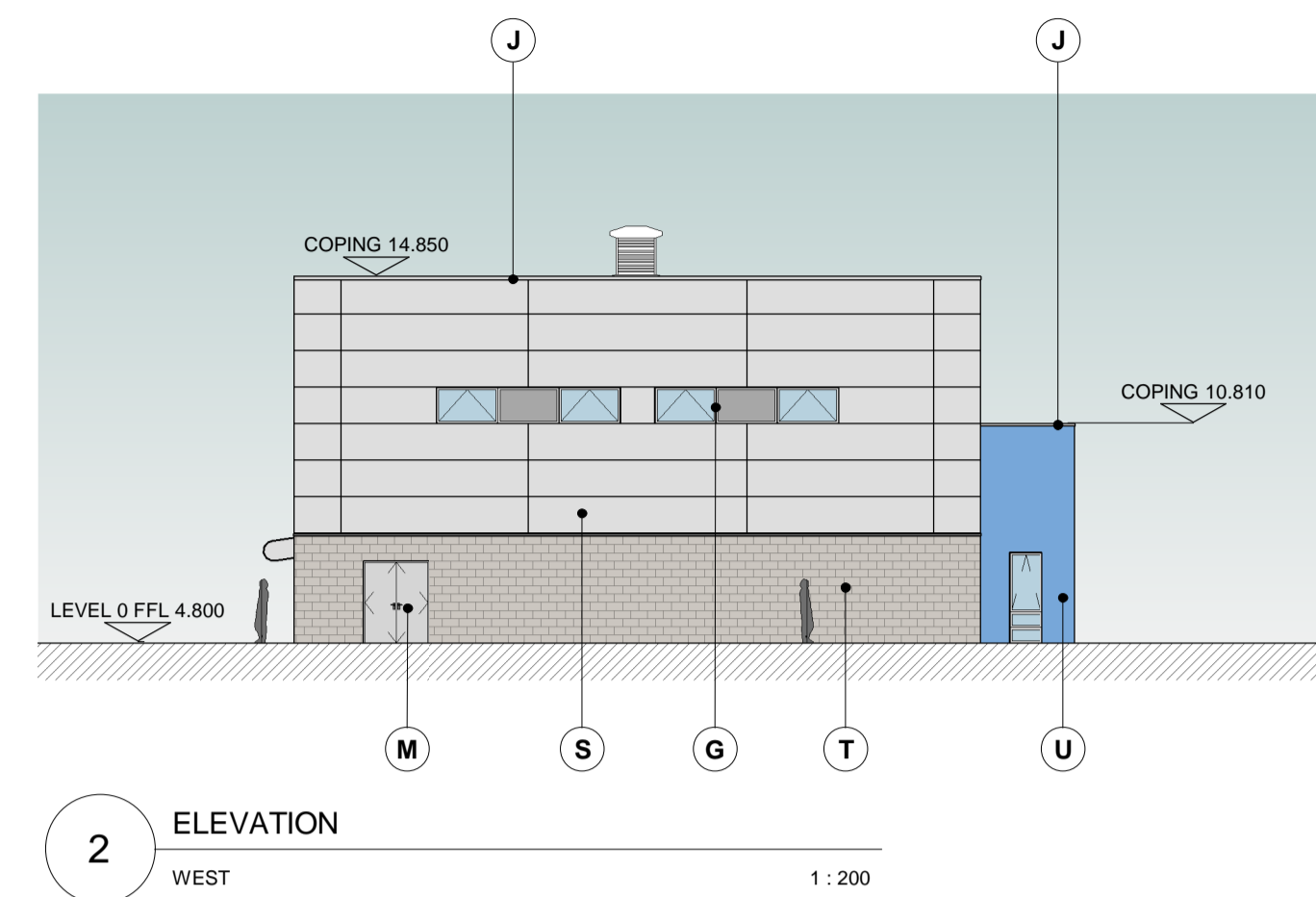
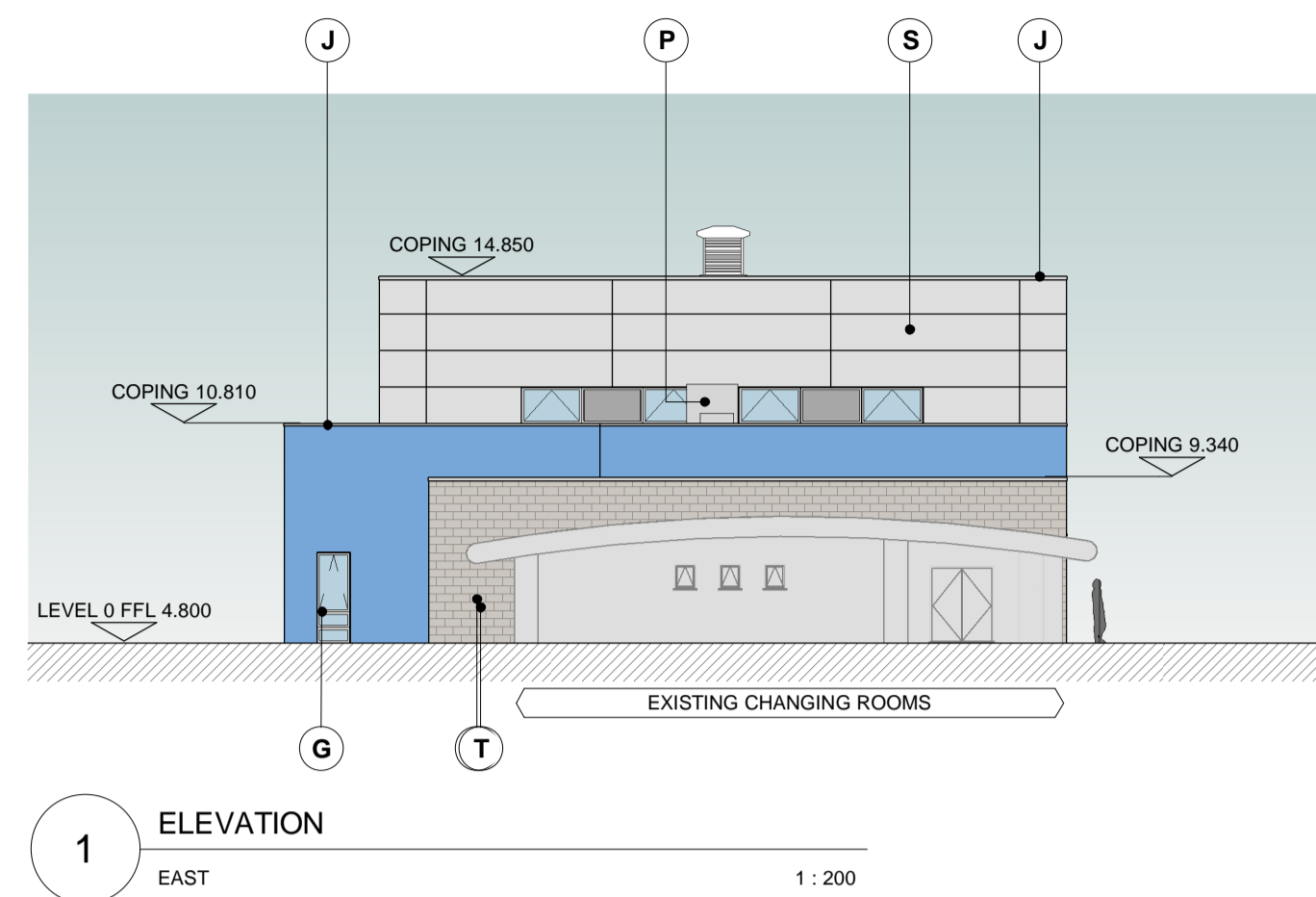
Construction

Maintenance / Cleaning / Operation

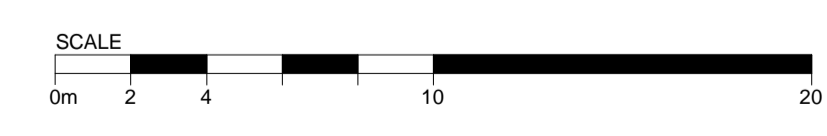
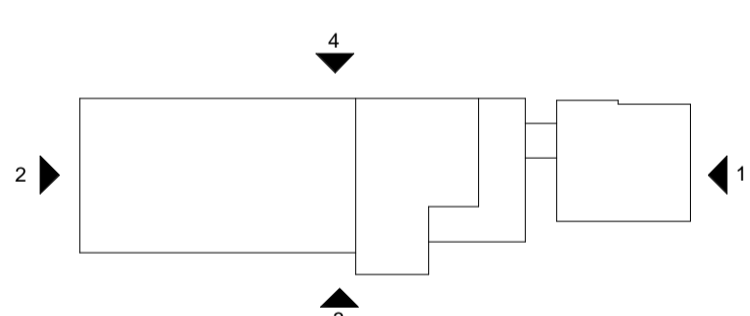
Decommissioning / Demolition

Revisions

/	07.09.15	PLANNING ISSUE.	VG	SS
---	----------	-----------------	----	----



- LEGEND**
- A THROUGH COLOURED INSULATED EXTERNAL RENDER - COLOUR WHITE
 - B THROUGH COLOURED INSULATED EXTERNAL RENDER - COLOUR BLUE
 - C THROUGH COLOURED INSULATED EXTERNAL RENDER - COLOUR GREEN
 - D THROUGH COLOURED INSULATED EXTERNAL RENDER - COLOUR LILAC
 - E COLOURED RAINSCREEN PANEL SYSTEM - FACE FIXED - COLOUR GREEN
 - F COLOURED RAINSCREEN PANEL SYSTEM - FACE FIXED - COLOUR GREY
 - G POLYESTER POWDER COATED COMPOSITE WINDOWS
 - H POLYESTER POWDER COATED HIGH PERFORMANCE COMPOSITE WINDOW WALLING
 - J POLYESTER POWDER COATED ALUMINIUM COPING
 - K POLYESTER POWDER COATED ALUMINIUM FRAMED GLAZED DOORS
 - L POLYESTER POWDER COATED ALUMINIUM LOUVRED DOORS
 - M POLYESTER POWDER COATED ALUMINIUM DOORS
 - N ROOFLIGHT
 - P PLANT
 - Q FLUE
 - R ALUMINIUM RWP/HOPPER - COLOUR BLACK
 - S MICRO-RIB COMPOSITE CLADDING PANELS - COLOUR GULL GREY
 - T LIGNACITE FACING BLOCKWORK
 - U COLOURED EXTERNAL RENDER - COLOUR BLUE
 - V WINDCATCHER - COLOUR TBC



PLANNING
 Client
KIER CONSTRUCTION
 Project
CASTLE COMMUNITY COLLEGE

Drawing title
SPORTS HALL PROPOSED ELEVATIONS

KSS Scale at A1
 1:200
 File ref
 15697-KSS-ARC-01-00
 Drawn by Date drawn
 IM 20.08.15
 Checked by Date checked
 SS 20.08.15

Project number Drawing number Revision
 15697 PL-320 /