

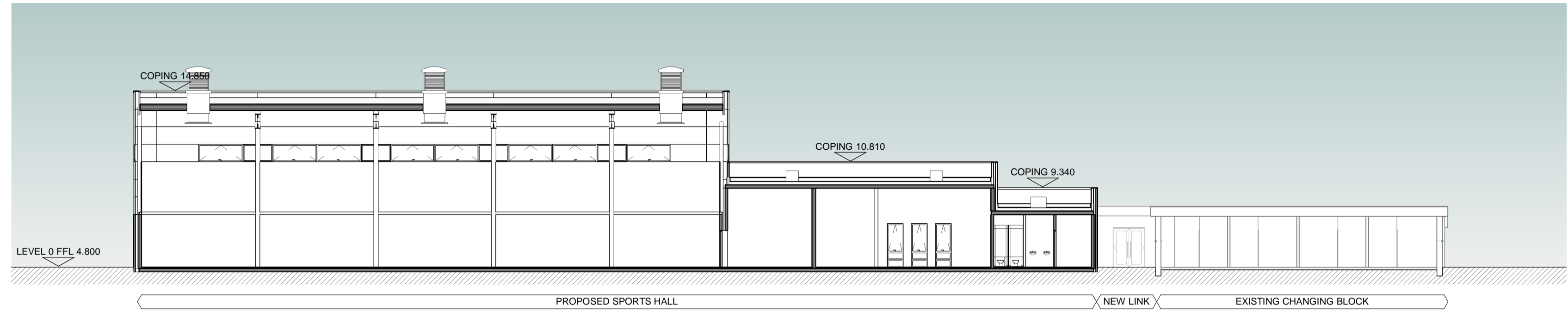
Health and Safety Information
 In addition to the hazards/ risks normally associated with the types of work detailed on this drawing, please note the following.

Construction

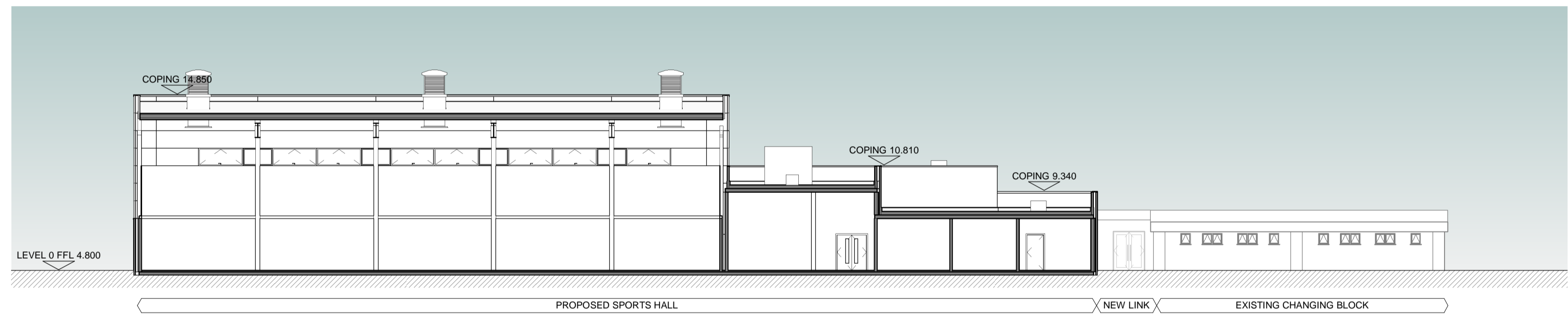
Maintenance / Cleaning / Operation

Decommissioning / Demolition

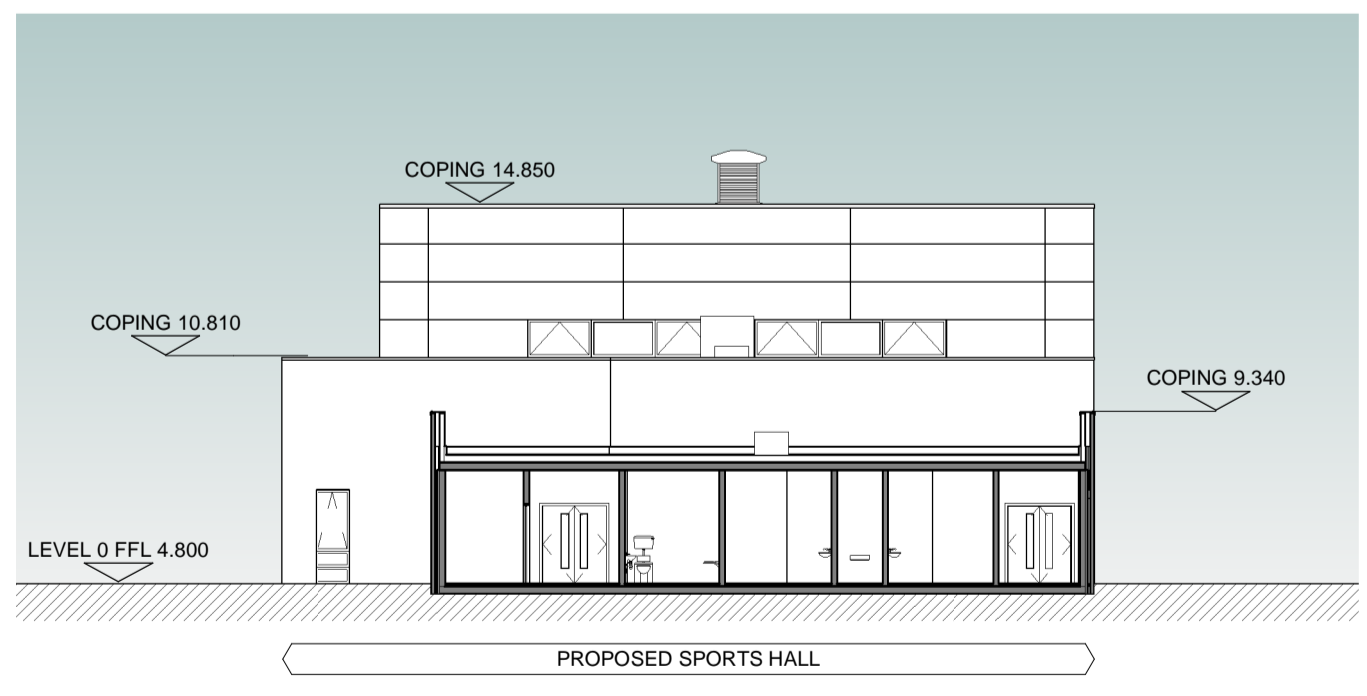
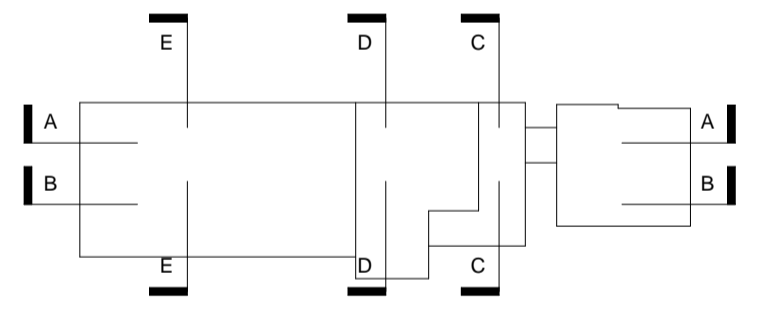
Revisions		
/	07.09.15	PLANNING ISSUE. VG SS



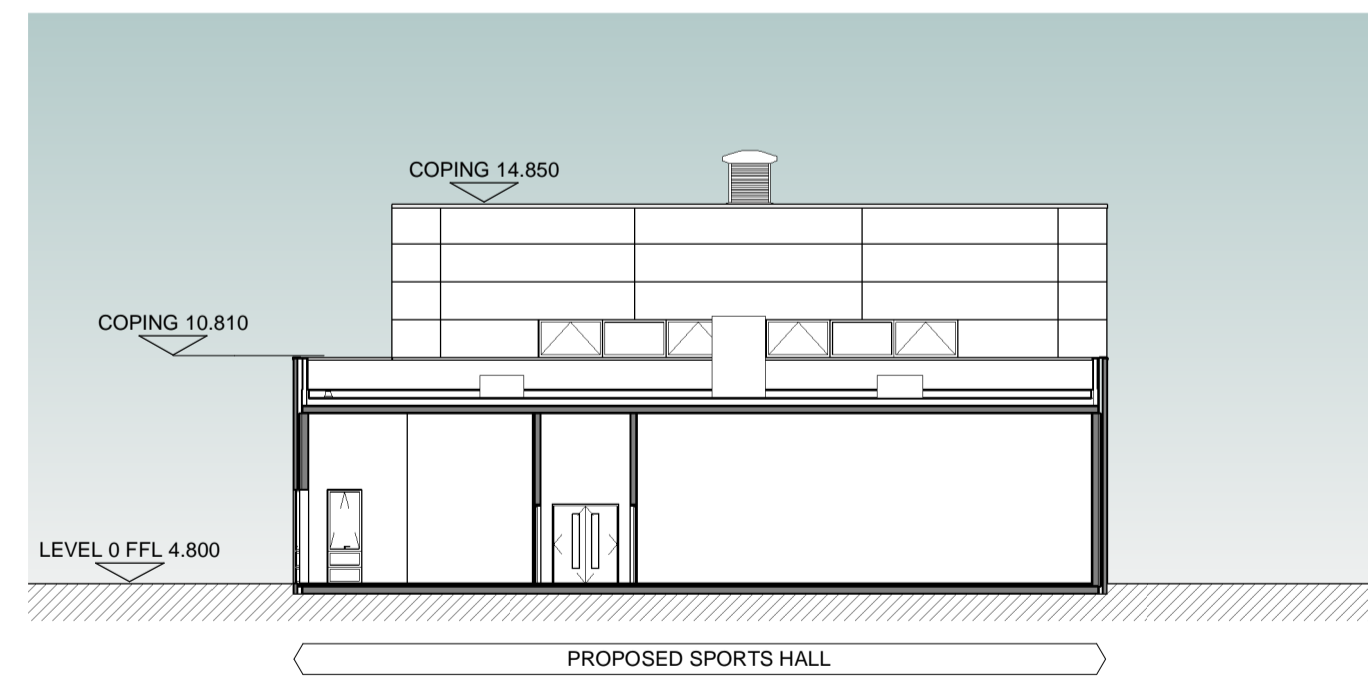
A-A SECTION
 THRU SPORTS HALL AND DANCE STUDIO 1 : 200



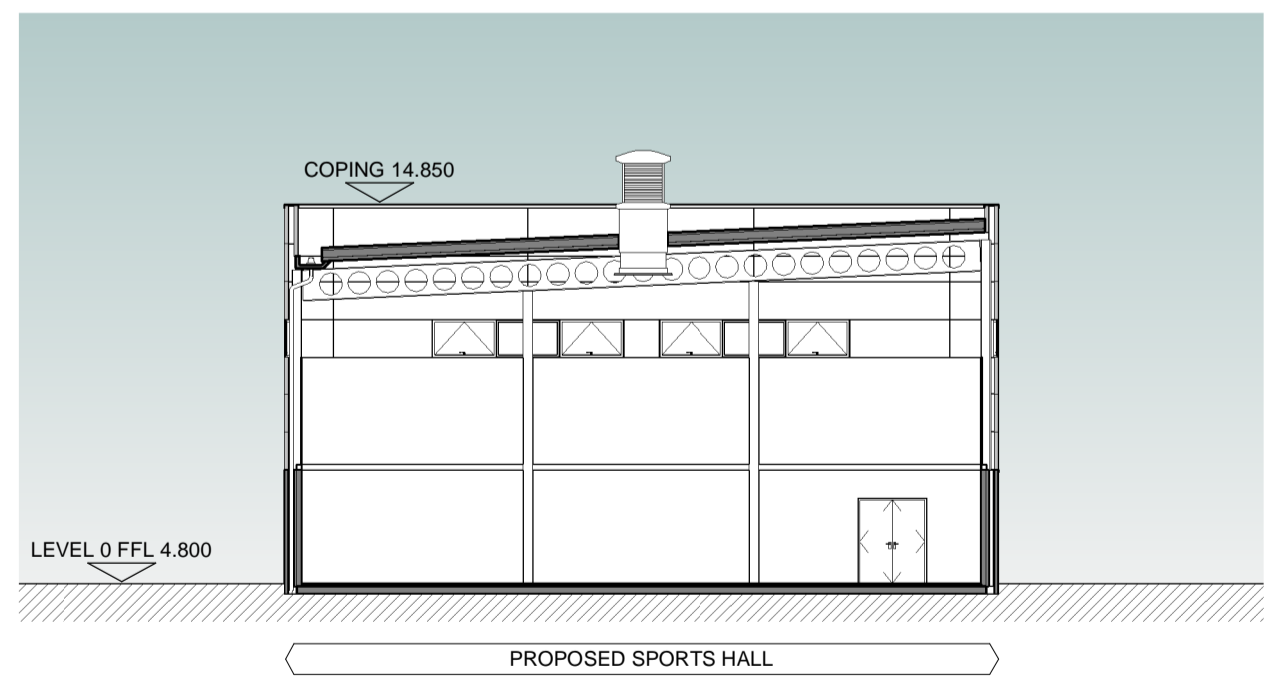
B-B SECTION
 THRU SPORTS HALL AND FITNESS STUDIO 1 : 200



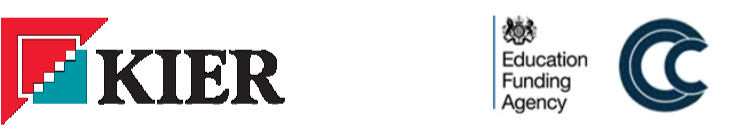
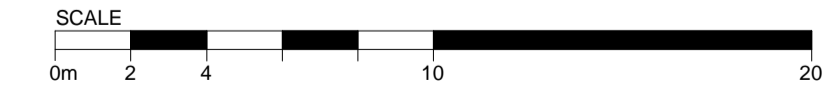
C-C SECTION
 THRU OFFICE 1 : 200



D-D SECTION
 THRU FITNESS AND DANCE STUDIOS 1 : 200

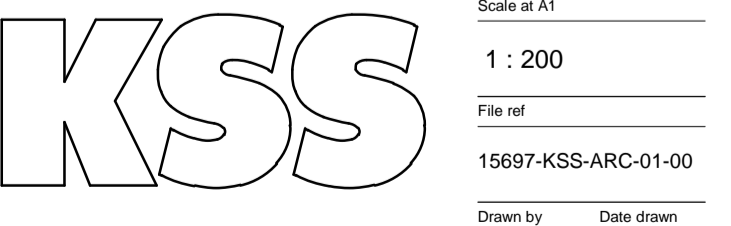


E-E SECTION
 THRU SPORTS HALL 1 : 200



PLANNING
 Client
KIER CONSTRUCTION
 Project
CASTLE COMMUNITY COLLEGE

Drawing title
SPORTS HALL PROPOSED SECTIONS



London 1 James Street London W1U 1DR T+44(0)20 7907 2222 F+44(0)20 7907 2299	Sevenoaks 7 Blighs Walk Sevenoaks TN11 3 1DB T+44(0)20 7907 2222 F+44(0)1732 467 841	IM Checked by SS	21.08.15 Date checked 21.08.15
--	--	------------------------	--------------------------------------

Project number	Drawing number	Revision
15697	PL-220	/